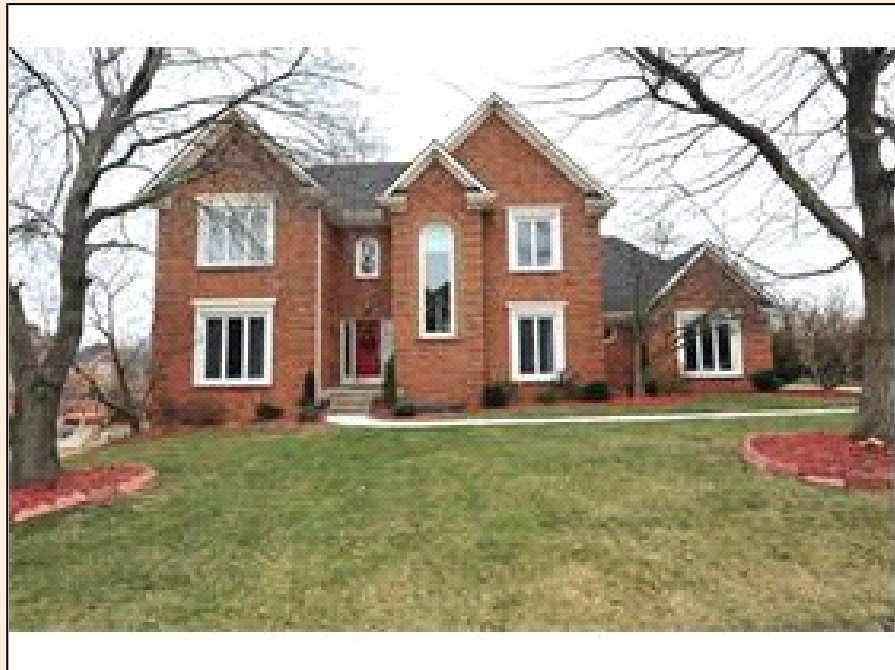


7102 Wood Briar Rd Louisville

7102 Wood Briar Rd

PROPERTY DETAILS



Listing Price: **\$395,000**

Listing Address: 7102 Wood Briar Rd

Louisville KY 40241

Bedrooms: 4

Full Baths: 3

Partial Baths: 1

SQ FT: 4000

Style: Traditional

Garage: 2 Car

Heat Source: Gas

QR Code:

On a SmartPhone?
Scan the QR code
to see this listing



PROPERTY DESCRIPTION

Dramatic, Elegant and Amazingly Comfortable! This Rare Custom Built Woods of St Thomas updated 1 1/2 story brick home offers lifestyle, design and value! Rich hardwood floors greet you as you enter the large entryway. Through French Doors to the left you'll find a Living room/office with a Trey Ceiling, Recessed Corner Lights. Ahead of you an Enormous Warm and Inviting Great Room with Recessed Lighting, Ceiling Fan and Crown Moldings and a wood burning fire place. The Gourmet Kitchen was completely remodeled in 2009 and features Upgraded 42 inch Cabinets with Custom Sliding Shelves and Angola Black Granite Countertops. All Appliances are Stainless Steel and Energy Efficient, the Cooktop is Gas and there's a Jenn Air Hood vented to the Outside. Don't forget the Recessed and Under Cabinet Lighting and Ceramic tiled floor and Back splash. The Vaulted Breakfast area has a wall of Windows to View the Beautiful Backyard. There's a new series of cabinets too with Glass Fronts, Ceiling Fan and French Doors that lead to a Large Deck. The Mud Room off the Kitchen offers access to the 2 car oversized garage and has New Custom Cabinets for storage. This home has 2 Master Bedrooms Suites. The large 1st floor owner's suite has Double Trey Ceilings and Crown Molding. The Master Bathroom was updated in 2009 and features a Large Walk-In Closet, Ceramic Tile Floors, Double Vanities, Lighting Fixtures Brushed Nickel Faucets, Separate Shower and Jacuzzi tub. The 1st floor Laundry Room also has a Laundry Chute from the 2nd floor. Upstairs 3 Oversized Bedrooms, 2 with a Jack and Jill Bathroom the 3rd Bedroom has its own Bath. All 3 of the bedrooms have good size walk in closets. The finished lower level offers expanded space for family fun. The Kitchen, Family Room and Owner's Suite offer access to the deck (with a Gas Line for Outdoor Grilling) and beautiful Wide Open backyard. Other features include: Security System, Newer roof, A/C replaced in 2009. The home is move-in ready with fresh paint, new carpets on the 1st floor and updated chandeliers. Of course Easy Access to the Expressway and excellent neighborhood schools!

CONTACT INFORMATION



The Medley-Sokoler Team
RE/MAX Properties East
wesellsouthernindiana.com

10525 Timberwood Circle Suite 100
Lville KY 40223
502-376-5483
866-807-2933
bob@bobsokoler.com





Equal Housing Opportunity

Property information deemed reliable but not guaranteed and should be verified.

Copyright © 2003-2012 Real Pro Systems LLC. All rights reserved.